



**Achieve paperless workflow easily.
Reduce wasted time and cost related to paper report workflow.**

Current daily-use paper report in Excel turns digital report while remaining merit of paper form. As operator can complete reporting on site, no need to go back to office, and achieve to reduce print, storage cost and overtime work.



Various input styles and convenient features support to input easy and avoid mistakes and omissions.

Various input styles and features like avoiding mistakes and omissions, insert photos taken by tablet camera, using master data, input by QR code and and digital measurement tool through Bluetooth connection, etc.



Improve productivity and speed for sharing information by completion of reporting work on site.

Reports issued by operator on site bring digitalization at the time of uploaded to server. Share information between office and site in real-time and utilize the data immediately with data cooperation to other system.

i-Reporter Web Site

Please access to see more information for news, introduction, success stories and distributors.

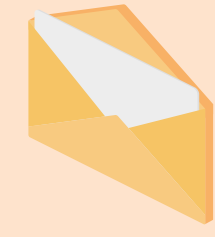
i-Reporter <https://conmas.jp/en/>



Flow to implement i-Reporter

1 Online application for brochure

Accepting online application for brochure and introduction document in web site.



2 Contact local distributor

Local distributor supports to introduce and purchase i-Reporter software.



3 i-Reporter trial

i-Reporter free trial is available for up to 2 months. Please inquire from trial page of i-Reporter web site.



4 Consultation by distributor

Local distributor can propose how to solve the paper workflow issues with i-Reporter.



CIMTOPS



<https://conmas.jp/en/>

head office Shin-Meguro Tokyu Building, 10F, 2-25-2, Kamiosaki, Shinagawa-ku, Tokyo 141-0021, Japan
TEL:+81-3-5721-4610 FAX:+81-3-3491-4610

[Contact Us]

iPad iPhone Windows tablet Paperless [Report on site] with Recording·Reporting·Browsing



i-Reporter

No.1 market share in Japan*



Reducing man-hour
65%
for report work

*In the market of support application for maintenance industry, evaluation by Fuji Keizai Management Co., Ltd.

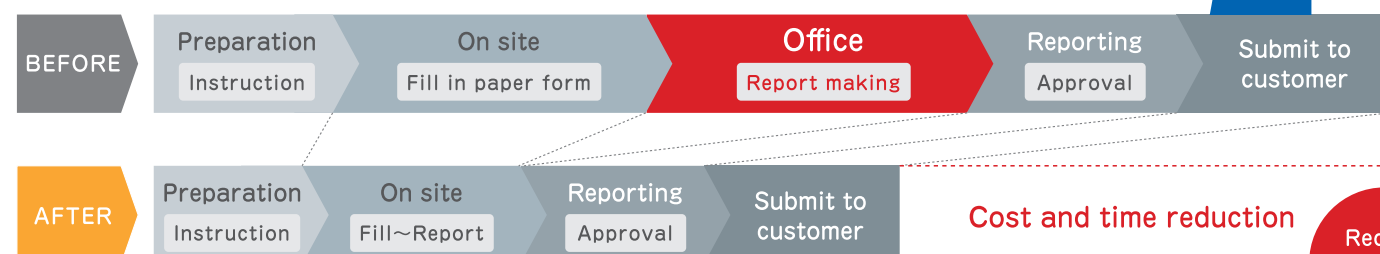
Change without changing ~65% cost reduction by magical document~

ConMas i-Reporter supports to solve all problems related to paper form!

Current daily-use paper report in Excel turns digital report while remaining merit of paper form. Old paper form workflow that we couldn't change until now is finally possible to digitalize and improve work efficiency and speed.

Image for implementation of ConMas i-Reporter

Report is completed on site. No need to go back to office!



case 1



Need reporting work at office after operation on site..... Is there a lot of additional works at office for paper reports?

Fill in paper form and take photos with digital camera on site, after that report making in Excel and input the data into system at office. Huge amount of works take a lot of time.

case 2



Values in paper report..... Is there mistakes and omissions?

Need to check if there are mistakes and omissions in handwritten report. And possible to misinput to system.

case 3



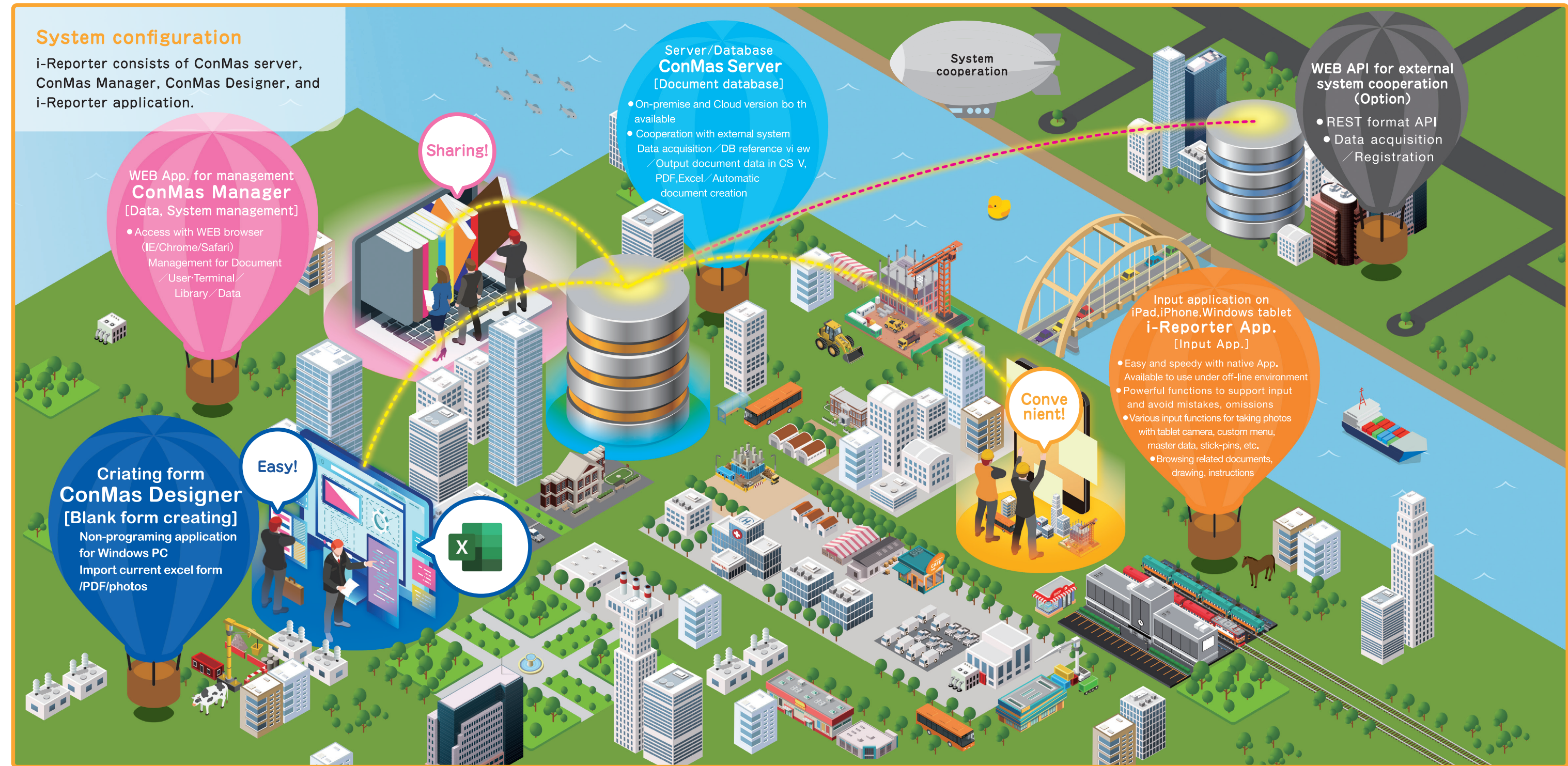
Paper report workflow..... Is it impeding work efficiency and sharing information?

Take long time until information in paper report is utilized like scanning, system input lead-time, for approval, and filing, etc.

With using iPad, iPhone, and Windows tablet,

New style of "Field Report on site" with recording, reporting and browsing that integrates digital input and handwritten report.

- Current daily-use paper report in Excel turns digital report while remaining merit of paper form.
- Library function allows browsing of related documents, operations manuals, drawing, etc. while report input.
- Offer the powerful functions and speedy operation iOS, Windows native application. Available to operate under of f-line environment.
- Manage all report data in database. Automated cooperation with other backend systems is also simple. Necessary functions for authority management, input history and high security are prepared.



Authority management, Input history, High security

- ID/Password ●Period of validity and strength for PW ●Terminal authorization ●Authority group ●Input history
- Reason for change ●Log-in history ●HTTPS Encryption Communications ●Camera control or single app. mode in MDM